



EASY PATCH

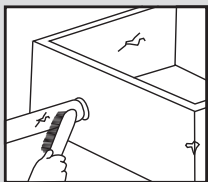
NATURES REPAIR KIT

LIGHT ACTIVATED FIBERGLASS REINFORCED SELF-ADHESIVE REPAIR PATCH

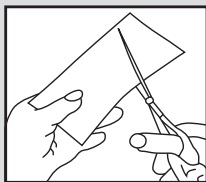
NO MIXING • NO MEASURING • NO MESS

Thousands of applications for home and industry

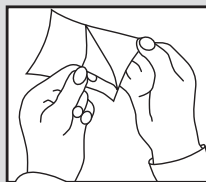
INSTRUCTIONS FOR USE



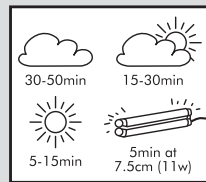
1. Clean off repair surface with brush/cloth/degreaser. For best results rough up surface to be sealed.



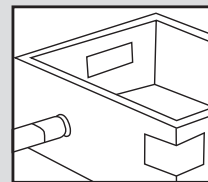
2. Cut patch to desired shape (easily cut with scissors).



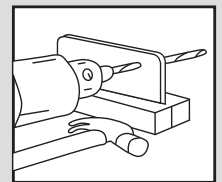
3. Peel off plastic on wrinkled side and press patch firmly into place, wrinkled side down. The patch bonds powerfully to virtually any clean, dry surface.



4. Allow to cure with UV (ultraviolet) light.



5. Repair complete.

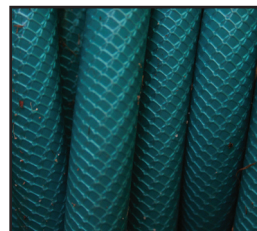


6. Patch may be drilled, sanded or painted following removal of clear plastic film.

IMPORTANT: Repair surface must be dry, free from dust, oil, grease, wax and all loose material. Again for best results rough up surface before applying. Ensure that wrinkle side is face down onto the area being patched. Some surfaces may require sealing prior to application. Attach adhesive surface to repair and apply firm pressure to ensure good bond. Expose to UV light (daylight) to harden to a permanent cure.

CAUTION: Keep out of reach of children, wash hands with soap and warm water after use. **Eye contact:** Flush eyes for 15 minutes, contact a doctor if irritation persists. **Inhalation:** If vapours cause irritation move to well ventilated area.

NOTE: Store unused portion in foil pouch.



Made in USA

Distributed by:

Drymix NZ Ltd, PO Box 109, Greenhithe, Auckland 0756

Tel: 0800-DRYPHONE (379 746)

Fax: 0800-DRYMIX (379 649)

www.drymix.co.nz