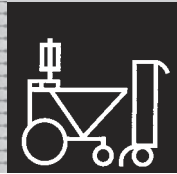
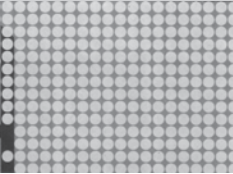
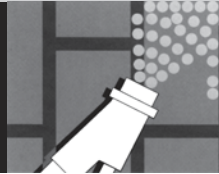
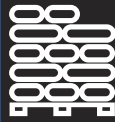


MCL® StuccoRite® Pre-mixed Render System - Data Sheet

MCL® StuccoRite™



MCL® StuccoRite™ Professional Multicoat NZ 660 Render.



MCL® StuccoRite™ Cement Renders are factory pre-mixed cement/lime/sand dry renders for exterior and interior use over substrates including concrete block, stucco mesh, precast, aerated autoclaved concrete (AAC), brick, fibre-cement and polystyrene (EPS).

Description

MCL® StuccoRite™ premix is a traditional solid plaster capable of being applied by accredited applicators using machine and by hand. The renders are easily applied, trowelled and worked to flat finishes.

Properties

MCL® StuccoRite™ Professional Multicoat NZ 660 Render.

NZ 660 Render cement is suitable as a multi-coat finish for use on brick, concrete block, AAC, and as a 3 coat finish coat over MCL® StuccoRite® mesh. This product can be used for thickness of between 5-100mm and is both a base and finish coat able to be sponged to a medium finish.

General Instructions

- MCL® StuccoRite™ renders can be easily worked to any required/specified finish from bold high profiles to smooth sponge, or steel float textures. Workability is assisted by controlled setting times (2-6 hours depending on product and conditions).
- The substrate for MCL® StuccoRite™ Cement Render shall be sound, free from dust, loose particles, release oils or other contaminants which may affect adhesion or bond strength.
- Preparation before application of MCL® StuccoRite™ shall include:
 - a clean surface by light brushing or waterblasting.
 - suitable sealer for all high absorbing substrates such as AAC, brick, masonry, or plaster.
- Application of MCL® StuccoRite™ may be by hand or machine and then spread using straight edges and trowels. With the use of a soft sponge and extra water, the surface can be worked to an even smooth finish as required.
- Coverage is 3 to 4 m² per 25kg polylined bag at nominal 4mm thickness.
- Storage of MCL® StuccoRite™ can be for up to six months in a dry place.

MCL® EuroMesh™

- MCL® EuroMesh™ must be embedded in potential cracking areas such as adjacent to windows and door corners and where there are dissimilar substrates, and to prevent panel deflection due to wind loading.

Painting and Waterproofing

- Paint coating can take place after curing MCL® StuccoRite™ at a rate of one day for every 1mm of thickness. It is recommended that an accredited sealer and elastomeric paint system be applied to MCL® StuccoRite™ to the exterior coating.
- Quality of cured MCL® StuccoRite™ Render complies with NZS 5251. Part 1 : 1998 "Cement plasters for walls, ceilings and soffits".
- Safety in Working with MCL® StuccoRite™ is set out in the Supa Coat "Material Safety Data Sheet" overleaf.

MCL® StuccoRite® Pre-mixed Render System - Data Sheet

Material Safety Data Sheet

Identification

PRODUCT NAME:

MCL® StuccoRite™ Renders
(MINERAL COATING).

PRODUCT CODE:

NZ 660 Render MultiCoat

Physical Description and properties:

Appearance: Powdered cement-type product.
Odour: None
BP: Not Applicable
Density: 1500 kg/m3
Volatile: Nil
pH: < 8
Flammability Limits: Not Applicable

Use:

Machine applied or Trowel-on cementitious Render
Dangerous goods classification:

UN Number: Not Applicable
Hazchem code: Not Applicable
Poisons schedule: Not Applicable

Composition:

Ingredients:	Content:
Reactive Fillers	High Content (>60%)
Cement	Medium Content (10-60%)
Lime Hydrated	Low Content (>10%)
Auxiliaries	Low Content (<10%)

Health Hazard Information

Swallowed:	Health Effects: Irritating to mouth and digestive tract, alkali.	First Aid Give plenty of water and seek immediate medical advice.
Eyes:	Irritating to eyes.	Irrigate copiously with milk or 0.9% Sodium Chloride eyewash solution or equivalent for at least 15 minutes.
Skin:	Prolonged contact may cause dermatitis.	Wash skin thoroughly with a lanolin based hand cleaner or mild detergent and water. Do not use solvents.
Inhaled:	Dust may cause respiratory discomfort If inhaled for long periods.	Remove person to fresh air, apply artificial respiration if necessary.

Precautions for use

Exposure Limits:

Long term exposure to cement or lime dust can cause irritation or inflammation of the respiratory system and of the eyes. Wet cement, and lime, especially as an ingredient in plastic (unhardened) render can dry the skin and may cause alkali burns. Prolonged exposure may cause dermatitis.

Ventilation:

In dust environments the use of dust masks and properly fitted goggles are recommended. Local dust extraction and collection may be used if necessary, to control airborne dust levels. Use of barrier creams, or impervious gloves, to protect the skin from contact is recommended.

Safe Handling Information

Storage and Transport:

MCL® StuccoRite™ needs to be protected from moisture. Storage may be in steel bins, or plastic lined multi-ply paper bags.

Spills and Disposal:

Spills are best cleaned up by dry methods such as a broom and shovel or vacuum device so as not to disperse dust into the air. Care should be taken to ensure product does not enter drainage systems. Personnel should wear full cover clothing. In confined environments personnel should wear dust masks and goggles. When handling wet cement or lime based renders personnel should wear boots and gloves. Mineral coatings can be treated as common waste for disposal or dumped into a land fill site.

Fire/Explosion Hazard:

Non flammable, will not decompose into hazardous by-products.

Environmental/Ecological Effect:

Environmentally safe, and will not affect biological purification plants.

Warranty Information

MCL® StuccoRite™ manufacturers' warranty is a no consequential damage warranty for the Product(s) only and does not warrant the workmanship of the Applicator. Except where the Consumer Guarantees Act 1993 requires otherwise, the liability of MCL® for Product(s) proven to be defective pursuant to the above warranty is limited, at MCL's sole option, to replacement of Products(s) or a refund of the purchase price paid for the Product(s). MCL® shall not be liable under the above warranty for:

1. Damage caused by maltreatment of the Product(s), such as mechanical damage, either during application or at some subsequent time.
2. Damage caused by faulty design and/or construction of the premises on which Product(s) are applied.
3. Product failure due to faulty application.
4. Any consequential, incidental or special damages arising directly or indirectly from the use of the Product(s) (as conditions of use are beyond MCL's control).
5. Loss, damage, physical injury or loss of income sustained arising from the use of any of the Product(s) (as conditions of use are beyond MCL's control).
6. Durability of the Product(s) when subjected to abnormal conditions, see Drymix Manufacturer's Warranty.

Manufactured for MCL® NZ Limited by Drymix NZ Limited Feilding.